

HOWIE FORESTRY SOLUTIONS FORGING AHEAD

There have been more new developments at Howie Forestry Solutions Ltd (HFS). In the last issue we reported that HFS had been appointed the Kesla dealers for Scotland. Since then, there have been some new and exciting additions to the equipment that the company supplies and installs, which will complement its existing range.

Adam Howie, the director of the company, was eager to show

me the current project which had just been completed at the workshop near Tarbolton in Ayrshire. Adam had just finished modifying a New Ford Holland T8.410, which would be the latest addition to the company's fleet of low ground pressure timber haulage equipment.

LPGs are used for removing timber from harvesting sites and delivering it to a collection point close to the main road. These vehicles reduce the damage to

forest and narrow B roads while also preventing wear and tear on articulated Lorries when travelling on rough forest roads. The New Holland had just been fitted with a new Kesla 2110T crane and cabin and was on extra wide 900 and 650 Michelin tyres, which reduces ground pressure.

HFS is the UK distributor for a new hydraulically-operated greasing system which is manufactured in Finland and

called Movalube. Greasing a machine can be time consuming and not a very welcoming prospect on a wet and windy day – the Movalube system has been designed with this in mind. It requires no electricity to work, as it is operated by hydraulic pressure generated from the components it is greasing; for example, when the crane cabin is raised and lowered, one pump of grease is sent to the moving mechanism. This way it is greased when being used as opposed to an electrical system that greases on a pre-set timer whether in use or not. Each lubrication point can be adjusted manually or closed if not needed, and if other

hydraulically-operated components are fitted to the machine they are easily added onto the system. As there are no electric cables that can oxidise or circuits that can fail, this is the ideal system for challenging forestry, construction, and mining conditions. It has been designed to work effectively in all types of weather and

comes with a full two years' manufacturer's warranty.

Even being stored for long periods doesn't affect the performance, as the moving parts are always lubricated even when not in use. Another benefit of this system is that it can be used with standard NLGI 00 grease or the thicker NLGI 2



Left: New Holland just after completion

Above: Movalube automatic greasing installed on the base of the Kesla 2110T's Kingpost.

in hotter or more demanding conditions. This can save a lot of money each year by reducing wear and tear on pins, joints and bushes, and saves over two days a year on maintenance time. It only needs refilling around once a month and is easy and quick to replenish. Adam can fit the Movalube to most equipment in about a day, and this system will not be long in recouping the initial outlay. The Movalube complies with ADR regulations and can be used safely on trucks and vehicles that carry dangerous cargo.

STEELYARD-PESON WEIGH LINK

A major problem facing timber hauliers is assessing the weight of timber. Different species of trees have different densities, which affects the weight; fresh cut wood is much heavier than timber stacked for a period. Ground conditions and soil types also affect growth rates of trees, which in turn influences the density. This is a minefield for hauliers, as overloading leads to safety issues, heavy fines and bans from entering the forest. Running underweight increases the operating cost of the lorry.

HFS have been loading articulated timber trailers with their low ground pressure equipment for many years. An accurate method of assessing the weight of each load that is travelling down the road is a necessity. The company uses the Steelyard-Peson weigh link system, which it has found to be highly accurate and reliable, so much so that the company



Steelyard-Peson weigh link system

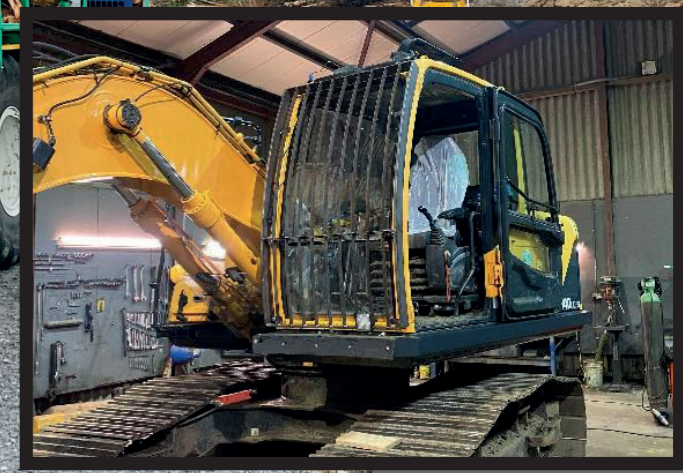
is now an authorised dealer and can supply and fit these weighers onto customers' vehicles and loading equipment.

The wireless on-board weighing system is installed between the end of the dipper boom and the rotator. It increases productivity by saving considerable loading time while maximising load capacity and distribution without overloading a vehicle. It is accurate no matter what position the vehicle is in, level or sloped, and is very sturdy, as it is manufactured from a solid block of high tensile steel. Fitting takes around half a day and it is easy to set up, use and is maintenance free. It is resistant to extreme shocks and designed for intensive use with different models in each of the 4-, 8-, 16- and 32-tonne scales to fit all types of linkages. It is a wireless communication system between the link and screen and requires no factory calibration. The weigh link has low energy consumption powered by a battery which lasts around a year. It is available with the new 7" touchscreen with easy-to-

read and operate colour display and simplified data transmission for crane cabins or the monochrome 4.3" backlit display with large buttons and steel protection for use with gloves which can be mounted in the cabin or on the crane's top seat. Both can be used with 12-36 voltage supplies and have the option of a wireless printer which can give a detailed customised print out.

The New Holland certainly gave off the impression it was ready for the work that is in front of it, and all the modifications carried out by HFS were very professional, meaning that it looked like it had come straight out of the factory with them fitted. Howie Forestry Solutions is a company focused on its customers' needs and will manufacture individual bespoke equipment fabrications as per its customers' requirements and ideas. I'm sure it won't be long before I will be back to see another interesting project leaving the workshop.

www.howieforestry.co.uk



—HOWIE— FORESTRY SOLUTIONS

www.howieforestry.co.uk

WHAT WE DO:

- Fabrication
- Timber Crane Supply/Installation
- Forestry Conversions
- Weighing system installation/repair
- Autolube system installation/repair
- Timber bodies/bunks
- Hydraulic hose making/repairs
- On site repairs
- LOLER testing
- Full refurbishment of plant/machinery
- Mobile welding
- Machinery alterations/modifications

